

Sea Isle Park

NEIGHBORHOOD ASSOCIATION

XLIV 2 ■ Summer 2022

SIPNA BOARD

Mara Thompson
President



Sandi Rogers
1st Vice-President

Kelly Bowers
2nd Vice President



Sharon Trower
Recording Secretary

Paul Trower
Treasurer



Kathryn Miskell
Corresponding Secretary

DISTRICT REPS

District 67-1
Cat Meadows
Larry Denman

District 67-2
Hal Lovett
Keith Bowers
Morgan McBride

District 67-3
Susie Hudson
Andy Prewitt

www.sipna.org
email: sipna@sipna.org



SIPNA

P.O. Box 171301
Memphis, TN 38187-1301

Serving East Memphis
since 1979

president's pen

Thank you, my neighbors, for your continued commitment to making our neighborhood such a splendid place to live! As we have started to come out of this pandemic, we have had record breaking SIP Fest and 5K participation numbers! Not to mention support from our loving sponsors as well! This neighborhood would be nothing without everyone of you doing your part.

I am sure that you all have heard the phrase, "It takes a village to raise a child" right? Well, I want to take that theory and apply it to the phrase, "It takes a neighborhood of virtuous neighbors to build a community!"

Research shows that being a good neighbor who leads by example creates a more welcoming and communal atmosphere. Funny enough, it does not even take that much effort! Committing to preform small acts everyday such as, waving and smiling at neighbors, possibly even saying hello, adding a potted plant to your front yard, playing with your kiddos outside and even shopping local have a HUGE impact on how others see not only yourself but your neighborhood. When you take the time to spend just a few minutes of your day creating community, others see that! They feed off that positivity! When neighbors feel more comfortable in their environment, they are more likely to open-up and do the same.

I challenge you all to try and take just a few moments out of your day to lead by example and foster community here in Sea Isle! Not even just in person, but also on the web. Instead of making that post online to rant about negatives, lets dote on the positives! After all, we all want to be able to tell our friends and family about what a wonderful community that we live in!

We already do this well, but let's continue to do it better! The SIPNA board members work diligently to try and create an everlasting foundation for our neighborhood to thrive, but the board cannot do it alone. We need the help of our neighbors, too! If you have ideas to foster community, I ask you to come forward and share those ideas, but also to take the time to help us bring them to life!

This summer let's celebrate our community, let's come together to make Sea Isle Park an even better neighborhood than it was last summer and shape an even stronger community!

See you around!

Mara Thompson • SIPNA President

✦ Positively Sea Isle! ✦

Find the "PS Star" for uplifting, positive stories from your neighbors! Brag a little about your loved ones and their achievements, share "little acts of kindness"

going on near you. Spread positivity and love!

Send to
sipna@sipna.org

We will print them as space is available.



Jan Strickland Larson

Mike and I were house hunting in the sea isle neighborhood with our realtor in 1989 when we saw a "for sale" sign in our now home. I literally told my realtor I was going to knock on the door. Against realtor's suggestion I did and they invited us into their home. And 30 years later we are still here! Love this neighborhood and LOVE LOVE my beautiful neighbors.



Erica Farmer Clark

How funny is the timing of this post and the event for our night tonight!!!! Tonight we went to dinner with our neighbors to celebrate 20 years together! Twenty years ago my husband and I bought our first home. We met our neighbors the first day and they have become a huge part of why we've never moved. We have raised our kids together, they've played and gone to school together, and now they are all in the college years. We've seen a lot together on our little part of SIPN! We've been blessed with wonderful neighbors all around but I do thank God he placed us next to the best!



SIPNA would like to thank Memphis City Beautiful for the grant we received in order to pay for the two Purple Martin Houses for Sea Isle Park!

They look great and already have many avian occupants!



**MEMPHIS CITY
BEAUTIFUL**

For information or if you have any concerns about the park, please contact:

Andy Prewitt
901-489-5265

SIPGarden /Community Garden

We are going into our 4th year of the community garden hosted by Colonial Park United Methodist Church at Park and Estate. We started in 2018 with about 25 raised beds and have grown to 62 beds. During the 2020 lockdown, this little piece of land became a haven that we could grow food on and feel safe. We could easily social distance while making connections with people.

Please note that we each pay a nominal amount for our bed and grow what we want. It is not a community garden in the sense that anyone can walk through and pick what they want. But there are no requirements for getting a bed for yourself if any are available.

If you are interested in playing in the dirt with a great group of folks, please contact Gary Vaughn at gwvaughn@colonialpark.org.

Sandi Rogers

SEA ISLE PARK



Bring your family!
18 hole Disc Golf Course
at Sea Isle Park.
Great for beginners
and practicing putters.

2

Open park hours. Find us on Facebook!

Time of Solace ~ at the Dog Park

I talk to many people who come to the Sea Isle Dog Park and many people have similar stories. One thing I've noticed, especially when asked what they like best about the dog park, and I've received similar answers from several people, is that their visit to the dog park offers solace in their day. It's like communion of sorts, which by definition is the sharing or exchanging of intimate thoughts and feelings, especially when the exchange is on a mental or spiritual level.

People always share similar details of their lives.

They may dislike their jobs and feel a strong sense of stress discussing their career, or they may be having issues with their children or spouse. They may be having financial, health and other relationship issues or they may be simply fed up with just about everything and need a break.

The Sea Isle Dog Park offers just that: A time of solace as people watch their canine counterparts prance around without a care in the world. Many people, including myself, often wonder how I might be more like my dog. How can I just be happy and live for the moment and enjoy what is going on with my life right now and not stress about the future? This is a characteristic of dogs that all visitors to the park enjoy watching: bantering, posturing and watching their canine counterparts play, all for the moment! For some people, the dog park is like a church of sorts, where people have a sacred time of fellowship with their higher power, and pray, meditate and when they get home, partake in a sip of wine and bread.

Yes. The Sea Isle Dog Park offers just that – a little piece of canine heaven in the midst of an often chaotic and dysfunctional life that we call existence.

~ Hal Lovett



**See
Spot
Run**



**Sea Isle
DOG PARK**
est. 2018



**SEA ISLE PARK
FITNESS AREA
UPDATE**

SIPNA is currently applying for grants to fund an updated fitness area to the park. The current workout area is near the McWherter Center off of Estate. More information soon on the progress and when you can expect new equipment to this popular and much used amenity of our park.

Kathryn Miskell - SIPNA Board Member

6TH ANNUAL

SEA ISLE PARK 5K

4.23.2022 | MEMPHIS



It was another great year for the Sea Isle Park 5k! This was our first year back in person since the pandemic began. Our last in-person 5k was in **2019!** It was clear early in planning this year's race how much we've all missed

the sociality and camaraderie that events like this foster. From the first year of our neighborhood 5k in 2016 – when we had more volunteers than participants – the race has grown exponentially. This year, we had 340 registrations and dozens of amazing volunteers from all over the Memphis Metro and outlying neighborhoods, and even a number of participants from out of state (and not just from Arkansas and Mississippi!). As it turned out, the race fell on the same day as another of Memphis' most popular races. We expect to be able to schedule next year's race on a day that doesn't conflict with this, which should drive an even stronger increase in participation.

This is our neighborhood's single largest fundraiser, the proceeds of which (100% of every dollar earned) go directly to the benefit of the park and neighborhood. Most of these proceeds are derived from our generous sponsors, all of which are local businesses, residents, and friends. And to see so many of our residents turn out and engage with them has left us encouraged that the future of our neighborhood 5k, and neighborhood broadly, is continuing strongly on an upward trajectory. Thanks to all our participants, volunteers, and sponsors.

This year's race raised nearly \$5000 more than our last in-person race. But, indeed, some records are more valuable than money. Chatting with friends and neighbors before the race about their goals, whether it's setting a new personal best or completing their first ever 5k, the bigger picture becomes even clearer. What exactly is the big picture here? It's one of those things that's difficult to define, but you know it when you see it. Among the many examples from this year's race stands a young boy, just 13 years old, who approached a group of veteran adult runners before the race and simply said, "I'm here to run with y'all." *And run he did.* So if you've been curious at all about living a healthier life, but maybe have been on the fence about walking or running a particular distance, we hope you'll give it a try.

Kelly Bowers, Director
Keith Bowers, Co-director



Photo credits:

Raymond Chiozza
PHOTOGRAPHY

See
winners
and more
at
sipna5k.org





SEA ISLE PARK 5K

DIAMOND SPONSORS



PLATINUM SPONSORS



SILVER SPONSORS



BRONZE SPONSORS



SPECIAL THANKS TO



Hey! Have you taken care of this yet?

ONLY \$20 for a whole year. Your dues help offset the cost of our newsletter, website, arboretum, SIPFest and helps us support Sea Isle Elementary School and Mt. Moriah Police Station... and so much more! SIPNA is committed to you, our neighbors. We need your support. Your dues are tax deductible and easy to pay. Join/renew at sipna.org and pay via PayPal or Visa, or by check by using the form on the back of this newsletter. Thank you for your support!





YARD of the Month May

Is it just me, or was April the craziest weather ever? It was either raining, or breezy, or cold... just not conducive to getting out and doing very much spring yard work... or awarding Yard of the Month... so we are beginning with May.

Congratulations to **Richard Gill** who lives at 5324 Colony Lane.... the corner of Colony Lane and Estate. Richard has lived there since 2001. His azaleas have been a beautiful "pop of color" this year. Love the 2 large beds that face Estate. He continues the azaleas around the front of the house. He does his own yardwork and is always out there working according to a neighbor who stopped by as we were planting the sign. Slow down as you drive down Estate to admire his work.

Last year we asked you to send us recommendations for SIPNA's Yard of the Month and many of them ended up winners. Let's do it again this year. Send us addresses and we'll check them out! Remember that the neighborhood is divided into 3 districts... this year we started in 67-3... so June will be 67-1. Check out the map on SIPNA.org to see the boundaries.

All the monthly winners receive a \$25 gift card from ACE Hardware...remember to visit Mary in the Garden Department; she lives in our 'hood and knows what does and doesn't work.

Susie Hudson



Neighborhood Churches Find one, GET CONNECTED!

All Saints Episcopal ♦ allsaintsmemphis.org

Christ the King Lutheran ♦ ctkmemphis.com

Colonial Park United Methodist ♦ colonialpark.org

Park Avenue Church of Chris ♦ parkave.org

Redeemer Baptist Fellowship ♦ redeemberbf.com

Woodland Presbyterian ♦ woodlandpres.org

New Hope In Christ Ministries ♦ facebook.com/nhicministries



FOOD PANTRY

Soup kitchens and food drives have been around for decades to help serve individuals and families in need of food or a hot meal. The closest food pantry for people in need in this area (Sea Isle Park) was at least a ten to fifteen minute drive, so there was a clear gap in this kind of community resource that needed to be filled. Thankfully that is not the case now! There are now weekly, biweekly, and monthly opportunities for our neighbors and community to come and get food for their families free of charge right here in the Sea Isle Park neighborhood.

Redeemer Baptist Fellowship at 5340 Quince Rd holds a monthly mobile food pantry in partnership with the Mid-South Food Bank; they are able to supply anywhere from 200-300 families in need. In addition to this resource, Redeemer also has a weekly opportunity on Thursdays from 3:30PM-5:30PM in the lower level of their building; those in the surrounding neighborhood are able to come and self-pick groceries from their inventory, which consists of local donations and leftovers from the mobile food pantry.

Just a mile up Estate, Colonial Park United Methodist at 5330 Park also holds a mobile food pantry and serves the East Memphis community twice a month, on the first and third Thursday morning. They also partner up with the Mid-South Food Bank and are able to serve a staggering 300-500 families! The long lines of cars that are willing to arrive hours before these events and wait to get food for themselves and/or their loved ones are a clear testimony of how many individuals and families in this neighborhood and the surrounding communities truly need and benefit from this do-goodery.

It is incredibly heartwarming to witness how the Sea Isle Park neighborhood sees families and communities in need and comes together to help serve them.

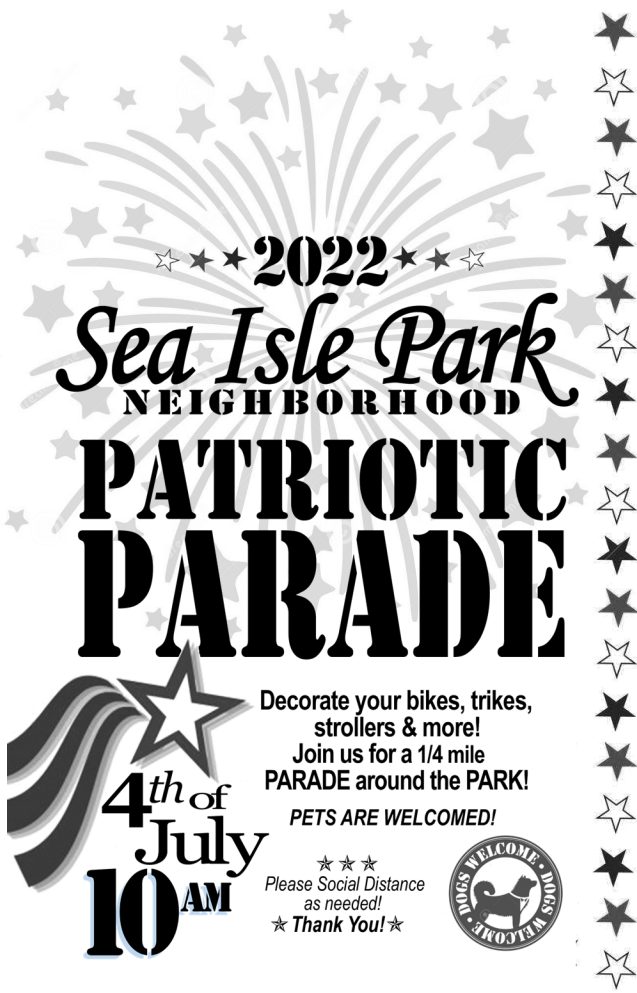
If you're interested in helping to serve our East Memphis community through these food pantries, you can visit the following websites to get plugged in and start volunteering:

redeemberbf.com/food.html

colonialpark.org/outreach-ministries

Morgan McBride





SEA ISLE PARK NEIGHBORHOOD ASSOCIATION
PO BOX 171301, MEMPHIS, TN 38187-1301

ADDRESS CORRECTION REQUESTED

NON PROFIT ORG
U.S. POSTAGE
PAID
MEMPHIS, TN
PERMIT NO. 78

Just DUE it. Please pay your association dues - just \$20! Because of folks like you paying their dues, so much is made possible in our neighborhood.

Please check - is your mailing label / contact information correct?

◇New ◇Renew ◇Update ◇Donation

Name _____
Address _____
City _____ ST _____ Zip _____
Email(s) _____
Phone(s) _____ / _____

Annual Tax Deductible Dues:
\$20 Residence / \$100 Business
Checks payable to SIPNA mail to:

SIPNA
P.O. Box 171301
Memphis, TN 38187-1301

PAY ONLINE: *SIPNA.ORG*



Sea Isle News ©
Edit / Design
Gail Jackson



Thank you for supporting SIPNA -
keeping our neighborhood one of
the most sought after in Memphis!



Neighborhood Watch Meeting May 10th, 22 ♦ Mt. Moriah Station

First, a thank you to everyone serving and protecting our East Memphis community. May 11th -17th is "Police Memorial Week." When speaking to our officers, be sure to thank them for their service to our community. Shelby County District Attorney Amy Weirich spoke about school letting out May 27th, and how juvenile crime in Shelby County has the lowest percentage of repeat offenders in the state, thanks to great programs and great people volunteering their time to our youth. Memphis has so much going for it and our youth can be the difference in everything! The Memphis Police are looking for new recruits, offering sign-on bonus' of \$15,000 after a year of service. Bottom line, crime is bad and getting worse; look out for yourself, be mindful of your surroundings and look out for your neighbors. That's how we can all fight back against crime.

Jarrett Carter
SIPNA Board Member
Resident of East Memphis