

Sea Isle Park

NEIGHBORHOOD ASSOCIATION

XLV 2 ■ Summer 2023

SIPNA BOARD

Mara Thompson
President



Sandi Rogers
1st Vice-President

Kelly Bowers
2nd Vice President



Sharon Trower
Recording Secretary

Paul Trower
Treasurer



Kathryn Miskell
Corresponding Secretary

DISTRICT REPS

District 67-1
Cat Meadows
Larry Denman

District 67-2
Keith Bowers
Morgan McBride

District 67-3
Susie Hudson
Andy Prewitt

At-Large
Jarrett Carter
Jesse McDonald

www.sipna.org

email: sipna@sipna.org



SIPNA

P.O. Box 171301

Memphis, TN 38187-1301

*Serving East Memphis
since 1979*

president's pen

Hello neighbors, welcome to another Memphis Summer! It has been an incredible beginning to the season and the neighborhood is buzzing! The bees and budding trees are not the only ones who have been busy at work in the neighborhood. On behalf of the SIPNA board, I am thrilled to announce that the Sea Isle Park Neighborhood Association has been awarded a generous grant of \$75,000 to enhance our community and bring about positive changes for all residents. This incredible achievement is a testament to our ongoing, collective efforts and the value placed on our neighborhood association by elected officials and by other civic groups.

Thanks to the generous support of the Shelby County Commission and our County Commissioner, Brandon Morrison, SIPNA will be able to implement a range of projects and initiatives that directly benefit our community. These funds will be allocated strategically to address key areas of improvement and create a safer, more vibrant, and inclusive neighborhood. We plan to revitalize Sea Isle Park by introducing new amenities, upgrading existing facilities, and creating engaging spaces for visitors.

A portion of the grant will be dedicated to enhancing our local park and recreational facilities. SIPNA is partnering with the Memphis Parks Division to upgrade the exercise/stretching area near Estate Road on the northeast end of the park. The disc golf course recently received a face lift, with the installation of brand-new signage around its course.

To further enhance the cohesiveness of the park, Hollywood Feed also generously donated new welcome signs to match the branding of the new disc golf signs that will also carry over to the exercise area. We believe these additional improvements will provide our residents with a beautiful and functional park where families can gather, children can play, and community events can take place. We have many more exciting additions coming your way and I cannot wait to keep you in the loop as plans are approved.

With gratitude to the Shelby County Commission for their trust in development of SIPNA, we look forward to the positive impact it will have on our community. Together, let's continue building a Sea Isle Park Neighborhood that we are proud to call home!

Mara Thompson, SIPNA President

We want to thank everyone that came and paid their dues at our June General Assembly Meeting! It was the largest number of dues we've ever received at a General Assembly and we thank you all.

~ SIPNA Board

RECYCLING 101



Recycling is a convenient and easy way to keep our community clean. Recycling promotes sustainability by keeping harmful plastics out of the environment and reducing the use of raw materials. It is important to recycle only the items that are accepted by the Memphis recycling facility in order to keep recycling operations running smoothly.

Only the following items should be placed in a curbside recycling bin:

PAPER:

Flattened cardboard, junk mail, office paper

PLASTIC:

Containers with lids, produce bins, and buckets

METAL:

Aluminum cans and steel containers

GLASS:

Bottles and jars

Before placing items in the recycling bin, ensure that items are clean, empty, and dry. Unclean food containers can contaminate plastics during the melting process and render materials unusable. If an item is smaller than the size of a credit card, do not attempt to recycle it. These items can damage the gears of recycling machines. Small items, such as plastic caps, should be replaced on containers before placing in the recycling bin. Items should be placed in the recycling bin loose. Do not enclose items in plastic bags. Items that cannot be recycled include grocery bags, non-container plastics and pouches, aerosol cans, hoses, electronic wires, biodegradable materials, clothing, shoes, foam, and batteries. These items cause problems in the recycling process and make it more challenging to recycle appropriate items. If an item cannot be recycled, consider ways in which it can be reused. By taking these small, simple steps, we can all work together to help make our planet a healthier place.

Quinlan Rhodes



*Thank you to **Margaret Pennington**, for all of her hard work each year making our SIPNA 4th of July Parade such a big success! It continues to get better each and every year and is always such a fun family event.*



Bring your family!
18 hole Disc Golf Course
at Sea Isle Park.
Great for beginners
and practicing putters.

Open park hours. Find us on Facebook!



YARD *of the* Month



What are the 4 words that gardeners have heard the most this year... “be patient” and “wait until”. Am I right?! Most of us aren’t the patient type. After the early freeze last fall, the early spring storm went through our neighborhood and wreaked havoc on our trees and homes, followed by nonstop rain. Well, Mother Nature is showing us she is still boss. We were patient and postponed starting our hunt for SIPNA Yard of the Month until May and we found a good one. We caught Susan Brown at 5010 Welchshire working in her yard one afternoon planting some annuals, moving some perennials, and adding some mulch to make it neat. Susan has lived in the ‘hood for about 17 years and enjoys gardening as therapy from the craziness of life. She has some lorapetalums that look like many shrubs this year...but she is being patient as well as saving some money, since there is new growth starting at the bottom.

Susie Hudson
Yard of the Month



Sea Isle is divided into three districts. In rotation, a winner is chosen monthly—spring thru fall. Each winner receives an ACE Hardware gift card! Wonder in which district you live? Check the map on SIPNA.org.

The Power of Neighbors April 1 in SIPNA

On a Friday night in April, after much of the city of Memphis was under a tornado warning... I breathed a sigh of relief just before 10pm and went to bed. Minutes later the wind and trees were pounding the windows. It didn’t last long, but the damage was done. Sea Isle neighborhood was hit hard by the storm. No surprise the power went out and many of the beautiful trees we so dearly love in East Memphis were down, everywhere.

We spent days outside on our porch, and many other folks did as well. I saw neighbors everywhere helping each other. I met some new people, waved at everybody and accepted every offer of food and coffee from friends and neighbors in the area. There were many challenges that weekend as we were all figuring out what to do next, but it reminded me how important neighbors are to each other.

Two months later, there are still tarps on many roofs as they are being repaired or rebuilt. It’s hard to see the damage, and I miss the trees- but because of the great people in this area I’m thankful to call Sea Isle HOME!

Kathryn Miskell
SIPNA Corresponding Secretary



***A neighborly act of kindness
while the neighborhood
was without power!***

10 Common Code Violations

CITY OF MEMPHIS/SHELBY COUNTY

1. **Accumulation of junk, trash, and debris.** It is a violation to accumulate junk, trash and other debris on residential property. This includes but is not limited to discarded items, auto parts, appliances, furniture, building materials, tires, paper, cardboard, plastics, or dead limbs or branches. All garbage should be disposed of by putting it in the proper container and placing it for collection at the appropriate location and time. It is also a violation to allow trash courts to remain on the curbed following pickup.



2. **Open storage of material and furnishings.** It is a violation to openly store on residential property any equipment, materials, or furnishing that is dangerous to public health, safety, or welfare. This may include, but is not limited to the use of indoor furniture outdoors, outside storage of household appliances, auto parts, or building materials. It is also illegal to dump or discard any debris or material along the roadside or on any unoccupied property.



3. **Parking and storing inoperable (job) motor vehicles.** It is a violation to park, store or leave any vehicle that is rusted, racked, john, dismantled, inoperable or abandoned and residential area, except in a fully enclosed structure or when screened from public view. This includes, but is not limited to any vehicle that is actively being worked on by an individual or business, and could not be, media the operable with minimal repairs.



4. **Excessive leaves, grass, trees and vegetation.** It is a violation to allow grass or weeds to grow over 12 inches high, or allow plants, shrubs, trees to grow in a manner that will obstruct pedestrian traffic or the visibility of motorist. This includes, but is not limited to the overgrowth of trees and vegetation that block sidewalks for hanging onto public streets or utility services.



5. **Off-street parking.** All street parking it is a violation to park or store in the working or non-working vehicles on the lawn/grass or sidewalk of any residential property. This also includes but is not limited to the parking restoring of more than four vehicles for eight for more than a 10-day period. At any single family residence structure, unless completely enclosed in a building.



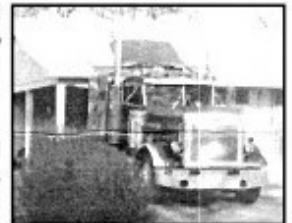
6. **Substandard structures and fences.** It is a violation to maintain any accessory structure, including storage sheds, Rogers and fences that are considered structurally unsound or are in need of repair in order to serve the intended purpose. This includes, but is not limited to damages to any framing, walls, ceiling, floors, decking in rooms.



7. **Special use and recreational vehicles and equipment.** No homeowner or tenant shall park or store any special use vehicle or recreational vehicle on residential property, unless the surface is made of concrete, asphalt or other approved material. It is a violation to park or store more than one recreational vehicle were special use vehicle/equipment in any single family dwelling. This includes, but is not limited to parking or storing any boat, trailer, camper, or RV in the front of the yard or on any residential street.



8. **Commercial vehicles and equipment.** It is a violation to park or store any commercial vehicle on any residential property or any residential street. This includes, but is not limited to any 18 wheelers, dump trucks or rolled back telling workers that is not actively being loaded or unloaded.



9. **Abandoned and derelict structures.** It is a violation for any property owner to refuse to properly secure any structure here she owns or is liable for, to prevent loitering of vagrants or criminal activity. This includes, but is not limited to any vacant house, building a structure for the doors and windows are broken or open the casual entry.



10. **General service and repair shops.** It is a violation to own or operate a commercial business in the district's on residential without proper permits. Certain commercial establishments are strictly prohibited in residential zone areas. This includes any for-profit general repair services such as automotive, equipment or appliance repair shops.



311

A Cleaner Memphis Starts with YOU!

7TH ANNUAL

SEA ISLE PARK 5K

4.15.2023 | MEMPHIS



It was another great year for the 7th Annual Sea Isle Park 5k! The Memphis Runners Track Club provided timing and finish line services, and it was a huge hit.

Race results can be found on our website sipna5k.org/results.

We want to personally thank those who sponsored, participated, volunteered, and cheered along the route. Thank you for supporting the race! We hope you'll join us again next year.

Kelly and Keith Bowers
Race Directors



A huge THANK YOU to our photographer and neighbor for capturing all of the special events in Sea Isle!

Raymond Chiozza
PHOTOGRAPHY

*Above:
Entertaining
the Runners*



*Right:
Attitude is
everything!*



SEA ISLE PARK 5K

DIAMOND SPONSORS






PLATINUM SPONSORS




GOLD SPONSORS







SILVER SPONSORS







BRONZE SPONSORS








SPECIAL THANKS TO





Church Connection

Neighborhood Churches

Find ONE and GET CONNECTED!

~ Kathryn Miskell

All Saints Episcopal

1508 S. White Station / 685-7333
allsaintsepiscopal.org

Christ the King Lutheran

5296 Park / 682-8404 / ctkmemphis.com

Colonial Park United Methodist

5330 Park / 683-5286 / colonialpark.org

New Hope In Christ Ministries

1708 Vera Cruz / 922-5901
www.facebook.com/nhicministries

Park Avenue Church of Christ

5295 Park / 682-1220 / parkave.org

Restoration Fellowship

5340 Quince / 207-1997
restorationmemphis.com

Woodland Presbyterian

5217 Park / 682-3349 / woodlandpres.org



SEA ISLE PARK NEIGHBORHOOD ASSOCIATION

PO BOX 171301, MEMPHIS, TN 38187-1301

ADDRESS CORRECTION REQUESTED

NON PROFIT ORG
U.S. POSTAGE
PAID
MEMPHIS, TN
PERMIT NO. 78

Just DUE it. Please pay your association dues - just \$20! Because of folks like you paying their dues, so much is made possible in our neighborhood.

Please check - is your mailing label / contact information correct?

◇New ◇Renew ◇Update ◇Donation



Name _____
Address _____
City _____ ST _____ Zip _____
Email(s) _____
Phone(s) _____ / _____

Annual Tax Deductible Dues:
\$20 Residence / \$100 Business
Checks payable to SIPNA mail to:

PAY ONLINE: SIPNA.ORG

SIPNA
P.O. Box 171301
Memphis, TN 38187-1301



BTS: Tennessee's traditional "Back-to-School" sales tax holiday on clothing, school supplies and computers is the last full weekend in July: Friday 7/28 12:01am thru Sunday 7/30 11:59pm.

Groceries: 3 months tax free August through October means Tennesseans will not pay tax on food and food ingredients sold in grocery stores. The tax-relief does not include alcoholic beverages, tobacco, candy, dietary supplements, or prepared food. Estimations are the food tax relief will save each family an average \$100 in taxes.

Sea Isle News ©
Edit / Design
Gail Jackson



Thank you for supporting SIPNA - keeping our neighborhood one of the most sought after in Memphis!